

XEBEC®

ISO 9001 Certified

XEBEC products are manufactured in a plant certified by ISO9001, the international standard of quality control and assurance.

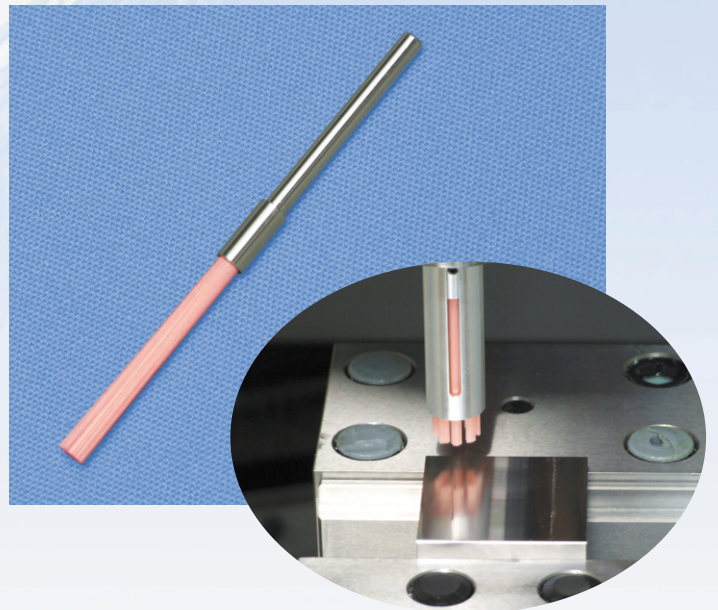
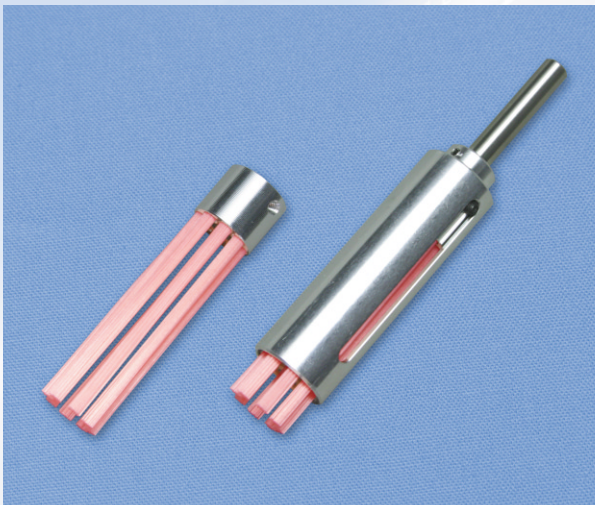
Cutting Fiber

for Precision Deburring

NEW!

Cutting Fiber

- Precision deburring is possible without breaking the edge.
- No surface scratches even in soft material such as Aluminum alloy.
- Ideal for deburring of small bores ($\phi 0.3\text{mm}$) or grooves (0.5mm).

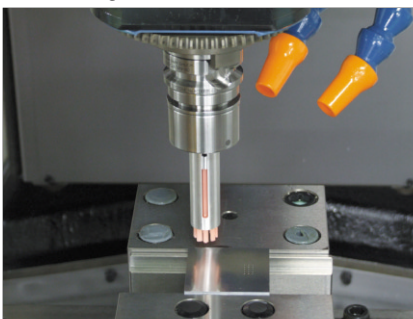


Features

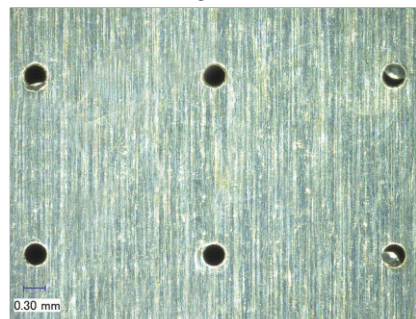
- An addition of a softer brush to the current XEBEC Cutting Fiber product lineup for detailed deburring of more precise parts.
- Softer, more flexible cutting fiber bristles than existing products.
- It will not deform unlike nylon brushes.

Applications

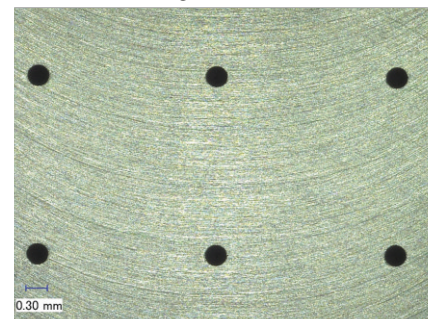
Deburring of 0.3mm drilled holes



Before deburring



After deburring



Also, cleaning of inner cylinder wall of bores is possible.

Cutting Fiber

Product code and specification

Product code	Fiber rod (Pink)	Brush diameter (mm)	Bristle length (mm)	Maximum revolutions (min ⁻¹)
A13-CB15M	A13 (Pink)	φ15	50	6,000
A13-EB03M	A13 (Pink)	φ3	30	6,000

■Depth of cut, Grinding load

- Wear the protective equipment, such as protective goggles, gloves and masks all the time while operating the tool. Wear long-sleeved clothes and tighten the cuffs to protect your skin.
- Processing is the most effective using the tips of the fine alumina fiber rod. For the cutting depth, use 0.5mm to 1.0mm as a guideline, up to 1.5mm.

•d by scattering of broken pieces or grinding dust from the tool while operating, enclose the working area with a safeguard to prohibit any person from entering into the dangerous area except the operator, or instruct any person working around the working area to wear the protective equipment.

⚠Warning

- Follow the precautions in use and safety measures for operators above without fail. If you fail to observe them, broken pieces of the tool or grinding dust may stick into your skin, or at worst stick into your eyes, causing blindness.

XEBEC[®] XEBEC TECHNOLOGY CO.,LTD.

Head Office 4-3-3 Koujimachi, Chiyoda-ku, Tokyo, Japan
Phone. +81-3-3239-3481 FAX. +81-3-5211-8964
U R L <http://www.xebec-tech.co.jp>
E-mail info@xebec-tech.co.jp

Factory and R/D 4061-1 Minami-Minowa-mura, Kamiina-gun, Nagano, Japan
Phone. +81-265-73-1523 FAX. +81-265-73-0375

Your order