



THRU-TUFF™

M-2 HSS Pins

Ejector Pins

U. S. Standard Inch

- *Stock Fractional Diameters*
- *Stock Fractional Oversize Diameters
+.0005", +.001", +.002" & +.005"*
- *Made to Order Non-Standard Oversized
Diameters in .0001" Increments*

Euro Metric

- *Shoulder & Straight Styles*
- *Diameters from 0.8 mm - 10.0 mm*

Custom Pins & Punches

Regal
Components

an Ezell Specialty Products company

Higher Standards for Molds and Dies

Regal Components, Inc.

4733 122nd Ave. N., Clearwater, FL 33762 USA

Tel: 727-299-0800 Fax: 727-499-7109

Toll-free Tel: 800-760-5715

E-Mail: sales@regalcomps.com

Web Site: www.regalcomps.com

**Price List
No. TT-701**

THRU-TUFF™
M-2 HSS Pins

THE ULTIMATE COMBINATION OF TOUGHNESS AND WEAR RESISTANCE FOR THE MOST DEMANDING GLASS-FILLED INJECTION MOLDING APPLICATIONS



Higher Standards for Molds and Dies

Regal
Components

an Ezell Specialty Products company

Regal Components, Inc.

4733 122nd Ave. N., Clearwater, FL 33762 USA

Tel: 727-299-0800 Fax: 727-499-7109

Toll-free Tel: 800-760-5715

E-Mail: sales@regalcomps.com Web Site: www.regalcomps.com





Index

Inch

Shoulder Type

Standard Fractional Diameters 1

Diameters: 1/32" - 7/64"
Lengths: 6", 8", & 10"

Standard Oversized Diameters 2

Diameters: +.0005", +.001", +.002", & +.005"

Made-To-Order Oversized Diameters 2

Decimal diameters .0001" increments

Straight Type

Standard Fractional Diameters 3

Diameters: 1/32" - 3/8"
Lengths: 6", 8", & 10"

Standard Oversized Diameters 4

Diameters: +.0005", +.001", +.002", & +.005"

Made-To-Order Oversized Diameters 4

Decimal diameters in .0001" increments

Metric

Shoulder Type 5

Diameters: 0.8 mm—2.5 mm
Lengths: 150 mm & 200 mm

Straight Type 6

Diameters: 1.5 mm—10.0 mm
Lengths: 100, 125, 160, 200, & 250 mm

Worksheet Templates

Custom Pins & Blades 7

Custom Sleeves 8

Terms and Conditions

Pricing: All prices are in US dollars and are subject to change without notice.

Payment Terms: 1% 10, net 30 days.

F.O.B.: Shipping Point, prepaid and added or collect

Shipping: Shipments will be made via UPS, Federal Express, or other available carrier specified by the customer. We are not responsible for shipping charges, damage, or delays encountered during transportation.

Returns: Prior approval must be obtained. Upon receipt, returned parts will be inspected and a credit will be issued to the customer's account, less a 15% restocking charge. Unless defective, custom and made-to-order components are not returnable.

Warranty: Due to the wide variety of applications and possible uses by our customers, no warranties are expressed or implied. Regal liability for items sold hereunder shall be limited solely to the repair or replacement of the items sold hereunder.

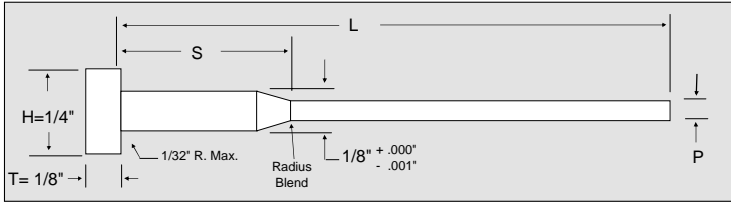


Type **STANDARD INCH FRACTIONAL DIAMETERS**

.0003" Diameter Tolerance

MATERIAL: M-2 HIGH SPEED STEEL, 60-63 Rc
HARDENED THROUGH 60-63 Rc

Heads drawn for maximum toughness and easy machining



TOLERANCES			
P	H	T	L
-.0005" -.0008" (See actual diameter below)	+.000" -.010"	+.000" -.002"	+.375" -.000"

HOW TO ORDER: <i>Specify</i>		
Quantity	Cat. No.	Length
12	TT-5-2	L-6"
6	TT-8-1/2	L-8"

P		S	REGAL CATALOG NO.	NET PRICE EACH (US\$)	
NOMINAL PIN DIA.	ACTUAL PIN DIA.	SHOULDER LENGTH		L-6"	L-8"
1/32"	.0308" .0305"	1/2"	TT-2-1/2	8.64	-
		2"	TT-2-2	7.95	8.53
		3"	TT-2-3	-	8.53
		4"	TT-2-4	-	7.26
3/64"	.0464" .0461"	1/2"	TT-3-1/2	5.48	-
		2"	TT-3-2	5.36	6.92
		3"	TT-3-3	-	6.92
		4"	TT-3-4	-	6.22
1/16"	.0620" .0617"	1/2"	TT-5-1/2	4.72	8.76
		2"	TT-5-2	4.55	6.22
		3"	TT-5-3	-	6.22
		4"	TT-5-4	-	5.64
5/64"	.0776" .0773"	1/2"	TT-6-1/2	4.72	8.76
		2"	TT-6-2	4.55	6.22
		3"	TT-6-3	-	6.22
		4"	TT-6-4	-	5.64
3/32"	.0933" .0930"	1/2"	TT-7-1/2	4.38	6.92
		2"	TT-7-2	4.20	5.41
		3"	TT-7-3	-	5.41
		4"	TT-7-4	-	5.18
7/64"	.1089" .1086"	1/2"	TT-8-1/2	4.38	6.92
		2"	TT-8-2	4.20	5.41
		3"	TT-8-3	-	5.41
		4"	TT-8-4	-	5.18

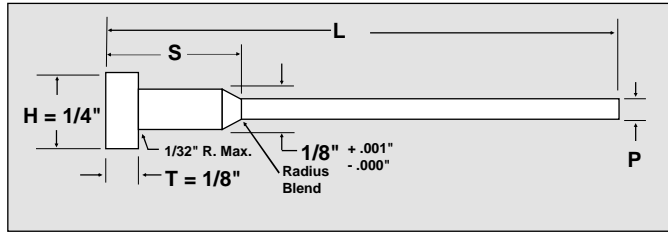
Regal Components, Inc.

4733 122nd Ave. North, Clearwater, FL 33762 USA

Ph: 727-299-0800 Fax: 727-499-7109 E-Mail: sales@regalcomps.com web Site: www.regalcomps.com

TTO / TTD

Types **OVERSIZED AND FOUR-PLACE DECIMAL DIAMETERS**



Regal THRU-TUFF™ M-2 High Speed Steel Hardened-Through Ejector Pins are now available from stock in the oversized diameters of +.0005", +.001", +.002", and +.005". Diameters are held to within .0003" total tolerance (-.0005"/-.0008" from the corresponding nominal oversized diameter). Non-Standard diameters in .0001" increments from .0309" shown in price table below are made to order. Call for delivery.

Diameters in .0001" increments under .0309" can also be made to order. Price and delivery upon request.

TOLERANCES				
P		H	T	L
STOCK OVERSIZED DIAMETERS	NON-STANDARD OVERSIZED .0001" DIAMETERS	+.000" -.010"	+.000" -.002"	+.375" -.000"
-.0005" -.0008" (See actual dia. below)	+.0000" -.0003"			

P	S	STOCK STANDARD OVERSIZED DIAMETERS						MADE-TO-ORDER NON-STANDARD .0001" INCREMENT DIAMETERS				
		REGAL CAT. NO.	ACTUAL PIN DIAMETER				NET PRICE EACH (US\$)		REGAL CAT. NO.	D + .0000" - .0003"	NET PRICE EACH (US\$)	
			+ .0005"	+ .001"	+ .002"	+ .005"	L-6"	L-8"		DIA. RANGE	L-6"	L-8"
1/32"	1/2"	TTO-2					\$ 16.00	-	TTD-2	.0309" - .0463"	\$ 16.25	-
	2"		.0313"	.0318"	.0328"	.0358"	\$ 15.90	\$ 18.75			\$ 16.15	\$ 18.75
	3"		.0310"	.0315"	.0325"	.0355"	-	\$ 18.75			-	\$ 18.75
	4"						-	\$ 18.15			-	\$ 18.15
3/64"	1/2"	TTO-3					\$ 15.35	\$ 30.45	TTD-3	.0465" - .0619"	\$ 15.60	\$ 30.45
	2"		.0469"	.0474"	.0484"	.0514"	\$ 15.20	\$ 18.15			\$ 15.45	\$ 18.15
	3"		.0466"	.0471"	.0481"	.0511"	-	\$ 18.15			-	\$ 18.15
	4"						-	\$ 17.65			-	\$ 17.65
1/16"	1/2"	TTO-5					\$ 15.35	\$ 30.45	TTD-5	.0621" - .0775"	\$ 15.60	\$ 30.45
	2"		.0625"	.0630"	.0640"	.0670"	\$ 15.20	\$ 18.15			\$ 15.45	\$ 18.15
	3"		.0622"	.0627"	.0637"	.0667"	-	\$ 18.15			-	\$ 18.15
	4"						-	\$ 17.65			-	\$ 17.65
5/64"	1/2"	TTO-6					\$ 15.05	\$ 28.75	TTD-6	.0777" - .0932"	\$ 15.30	\$ 28.75
	2"		.0781"	.0786"	.0796"	.0826"	\$ 14.90	\$ 17.45			\$ 15.15	\$ 17.45
	3"		.0778"	.0783"	.0793"	.0823"	-	\$ 17.45			-	\$ 17.45
	4"						-	\$ 17.25			-	\$ 17.25
3/32"	1/2"	TTO-7					\$ 15.05	\$ 28.75	TTD-7	.0934" - .1088"	\$ 15.30	\$ 28.75
	2"		.0938"	.0943"	.0953"	.0983"	\$ 14.90	\$ 17.45			\$ 15.15	\$ 17.45
	3"		.0935"	.0940"	.0950"	.0980"	-	\$ 17.45			-	\$ 17.45
	4"						-	\$ 17.25			-	\$ 17.25
7/64"	1/2"	TTO-8					\$ 13.50	\$ 26.65	TTD-8	.1090" - .1244"	\$ 13.75	\$ 26.65
	2"		.1094"	.1099"	.1109"	.1139"	\$ 13.35	\$ 16.50			\$ 13.60	\$ 16.50
	3"		.1091"	.1096"	.1106"	.1136"	-	\$ 16.50			-	\$ 16.50
	4"						-	\$ 16.30			-	\$ 16.30

How to order:	Cat. No.-Shoulder +.0005 or +.001 or .002 or +.005 Length	Cat. No.- Shoulder D=.xxxx Length
Examples	TTO-5-3 +.0005 L-8	TTD-2-1/2 P=.0400 L-6

Quantity Discounts (LARGER QUANTITIES PER QUOTATION)	STOCK STANDARD OVERSIZED DIAMETERS						NON-STANDARD .0001" INCREMENT DIAMETERS					
	100 +	50 - 99	25 - 49	10 - 24	5 - 9	1 - 4 pcs.	100 +	50 - 99	25 - 49	10 - 24	5 - 9	1 - 4 pcs.
	Per Quote	-\$9.00	-\$7.50	-\$5.00	-\$3.00	Net	Per Quote	-\$9.00	-\$7.50	-\$5.00	-\$3.00	Net

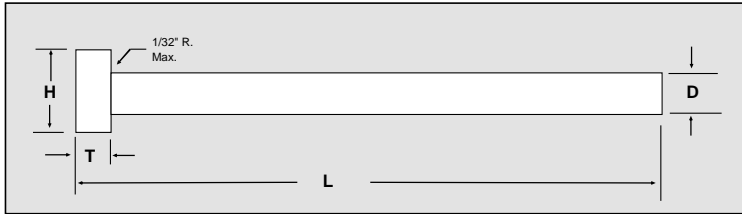
Regal Components Inc.



Type **STANDARD INCH FRACTIONAL DIAMETERS** .0003" Tolerance

MATERIAL: M-2 HIGH SPEED STEEL
HARDENED THROUGH 60-63 Rc

Heads drawn for maximum toughness and easy machining



TOLERANCES			
D	H	T	L
-.0005"/-.0008" (See actual dia. below)	+.000" -.010"	+.000" -.002"	+.375" -.000"

How to order: Specify		
Qty.	Cat. No.	Length
12	TT-9	L-6
6	TT-13	L-8

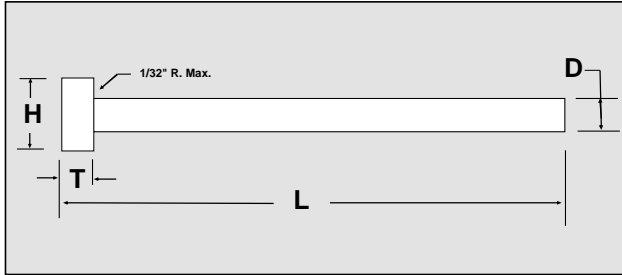
D		H	T	REGAL CAT. NO.	NET PRICE EACH (US\$)				
NOMINAL PIN DIA.	ACTUAL PIN DIA.	HEAD DIA.	HEAD THICK.		L-6"	L-8"	L-10"		
1/32"	.0308" .0305"	1/4"	1/8"	TT-2	8.64	-	-		
3/64"	.0464" .0461"			TT-3	5.48	-	-		
1/16"	.0620" .0617"			TT-5	4.73	8.76	-		
5/64"	.0776" .0773"			TT-6	4.73	8.76	-		
3/32"	.0933" .0930"			TT-7	4.38	6.92	-		
7/64"	.1089" .1086"			TT-8	4.38	6.92	-		
1/8"	.1245" .1242"			TT-9	2.97	4.66	-		
9/64"	.1401" .1398"			TT-10	3.07	4.94	-		
5/32"	.1558" .1555"			9/32"	5/32"	TT-11	3.07	5.76	-
11/64"	.1714" .1711"			11/32"	3/16"	TT-12	4.03	5.76	-
3/16"	.1870" .1867"	3/8"	TT-13	4.03		5.76	8.07		
13/64"	.2026" .2023"	13/32"	TT-14	4.03		5.76	8.01		
7/32"	.2183" .2180"		TT-15	4.03		5.76	8.25		
15/64"	.2339" .2336"	7/16"	TT-16	4.03		5.76	8.25		
1/4"	.2495" .2492"	7/16"	TT-17	4.03		5.76	9.18		
9/32"	.2807" .2804"	1/2"	1/4"	TT-19		6.88	10.20	13.74	
5/16"	.3120" .3117"	9/16"		TT-21		6.50	9.60	12.99	
11/32"	.3433" .3430"	5/8"		TT-23		8.00	11.40	15.99	
3/8"	.3745" .3742"			TT-25		8.75	13.11	17.49	

Regal Components, Inc.

4733 122nd Ave. North, Clearwater, FL 33762 USA
Ph: 727-299-0800 Fax: 727-499-7109 E-Mail: sales@regalcomps.com Web Site: www.regalcomps.com

TTO / TTD

Types **OVERSIZED AND FOUR-PLACE DECIMAL DIAMETERS**



TOLERANCES				
D		H	T	L
STOCK OVERSIZED DIAMETERS	NON-STANDARD OVERSIZED .0001" DIAMETERS	+ .000" - .010"	+ .000" - .002"	+ .375" - .000"
- .0005" - .0008" (See actual dia. below)	+ .0000" - .0003"			

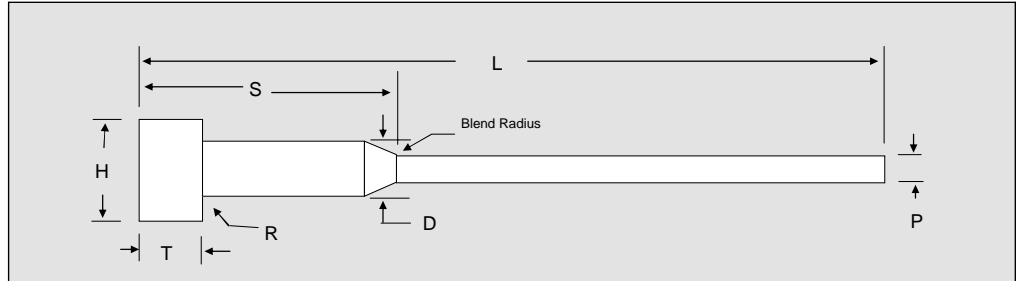
D	H	T	STOCK STANDARD OVERSIZED DIAMETERS						MADE-TO-ORDER NON-STANDARD .0001" INCREMENT OVERSIZED DIAMETERS								
			REGAL CAT. NO.	ACTUAL PIN DIAMETER				NET PRICE EACH			REGAL CAT. NO.	D +.0000" -.0003" DIA. RANGE	NET PRICE EACH				
NOMINAL PIN DIA.	HEAD DIA.	HEAD THICK		+ .0005"	+ .001"	+ .002"	+ .005"	L-6"	L-8"	L-10"			L-6"	L-8"	L-10"		
1/32"	1/4"	1/8"	TTO-2	.0313" .0310"	.0318" .0315"	.0328" .0325"	.0358" .0355"	\$16.50	-	-	TTD-2	.0309" - .0463"	\$ 16.50	-	-		
3/64"			TTO-3	.0469" .0466"	.0474" .0471"	.0484" .0481"	.0514" .0511"	\$15.90	\$ 31.00	-	TTD-3	.0465" - .0619"	\$ 15.90	\$ 31.00	-		
1/16"			TTO-5	.0625" .0622"	.0630" .0627"	.0640" .0637"	.0670" .0667"	\$15.90	\$ 31.00	-	TTD-5	.0621" - .0775"	\$ 15.90	\$ 31.00	-		
5/64"			TTO-6	.0781" .0778"	.0786" .0783"	.0796" .0793"	.0826" .0823"	\$15.50	\$ 29.30	-	TTD-6	.0777" - .0932"	\$ 15.50	\$ 29.30	-		
3/32"			TTO-7	.0938" .0935"	.0943" .0940"	.0953" .0950"	.0983" .0980"	\$15.50	\$ 29.30	-	TTD-7	.0934" - .1088"	\$ 15.50	\$ 29.30	-		
7/64"			TTO-8	.1094" .1091"	.1099" .1096"	.1109" .1106"	.1139" .1136"	\$13.95	\$ 27.10	-	TTD-8	.1090" - .1244"	\$ 13.95	\$ 27.10	-		
1/8"			TTO-9	.1250" .1247"	.1255" .1252"	.1265" .1262"	.1295" .1292"	\$13.95	\$ 27.15	-	TTD-9	.1246" - .1400"	\$ 13.95	\$ 27.15	-		
9/64"			TTO-10	.1406" .1403"	.1411" .1408"	.1421" .1418"	.1451" .1448"	\$13.95	\$ 27.15	-	TTD-10	.1402" - .1557"	\$ 13.95	\$ 27.15	-		
5/32"			9/32"	5/32"	TTO-11	.1563" .1560"	.1568" .1565"	.1578" .1575"	.1608" .1605"	\$15.25	\$ 28.25	-	TTD-11	.1559" - .1713"	\$ 15.25	\$ 28.25	-
11/64"			11/32"	3/16"	TTO-12	.1719" .1716"	.1724" .1721"	.1734" .1731"	.1764" .1761"	\$15.25	\$ 28.25	-	TTD-12	.1715" - .1869"	\$ 15.25	\$ 28.25	-
3/16"	3/8"	TTO-13	.1875" .1872"		.1880" .1877"	.1890" .1887"	.1920" .1917"	\$15.25	\$ 28.25	\$ 36.00	TTD-13	.1871" - .2025"	\$ 15.25	\$ 28.25	\$ 36.00		
13/64"	TTO-14	.2031" .2028"	.2036" .2033"		.2046" .2043"	.2076" .2073"	\$15.25	\$ 28.25	\$ 36.00	TTD-14	.2027" - .2182"	\$ 15.25	\$ 28.25	\$ 36.00			
7/32"	13/32"	TTO-15	.2188" .2185"		.2193" .2190"	.2203" .2200"	.2233" .2230"	\$15.25	\$ 28.25	\$ 36.00	TTD-15	.2184" - .2338"	\$ 15.25	\$ 28.25	\$ 36.00		
15/64"	TTO-16	.2344" .2341"	.2349" .2346"		.2359" .2356"	.2389" .2386"	\$15.25	\$ 28.25	\$ 36.00	TTD-16	.2340" - .2494"	\$ 15.25	\$ 28.25	\$ 36.00			
1/4"	7/16"	TTO-17	.2500" .2497"		.2505" .2502"	.2515" .2512"	.2545" .2542"	\$15.25	\$ 28.25	\$ 37.00	TTD-17	.2496" - .2544"	\$ 15.25	\$ 28.25	\$ 37.00		
9/32"	7/16"	TTO-19	.2812" .2809"		.2817" .2814"	.2827" .2824"	.2857" .2854"	\$18.00	-	\$ 38.00	TTD-19	.2808" - .2856"	\$ 18.00	-	\$ 38.00		
5/16"	1/2"	1/4"	TTO-21	.3125" .3122"	.3130" .3127"	.3140" .3137"	.3170" .3167"	\$18.00	-	\$ 38.00	TTD-21	.3121" - .3169"	\$ 18.00	-	\$ 38.00		
11/32"	9/16"		TTO-23	.3438" .3435"	.3443" .3440"	.3453" .3450"	.3483" .3480"	\$19.00	-	\$ 39.00	TTD-23	.3434" - .3482"	\$ 19.00	-	\$ 39.00		
3/8"	5/8"		TTO-25	.3750" .3747"	.3755" .3752"	.3765" .3762"	.3795" .3792"	\$19.00	-	\$ 39.00	TTD-25	.3746" - .3794"	\$ 19.00	-	\$ 39.00		
How to order:			Cat. No. +.0005", or +.001, or +.002", or +.005							Cat. No. D=.xxxx Length							
Examples			TTO-9 +.0005 L-8							TTD-11 D=.1575 L-6							
Quantity Discounts <i>Larger quantities per quotation</i>			STOCK OVERSIZED DIAMETERS						NON-STANDARD .0001" INCREMENT DIAMETERS								
6" Length 8" Length 10" Length			100 +	50 - 99	24 - 49	10 - 24	5 - 9	1 - 4 pcs.			100 +	50 - 99	25 - 49	10 - 24	5 - 9	1 - 4	
			Per quote	- \$9.00	- \$7.50	- \$5.00	- \$3.00	Net			Per quote	- \$9.00	- \$7.50	- \$5.00	- \$3.00	Net	
				- \$19.00	- \$17.50	- \$15.00	- \$10.00					- \$19.00	- \$17.50	- \$15.00	- \$10.00		

Regal Components Inc.

4733 122nd Ave. North, Clearwater, FL 33762 USA
Ph: 727-299-0800 Fax: 727-499-7109 E-Mail: sales@regalcomps.com

MTT Type *Euro Metric*

M-2 HIGH SPEED STEEL
HARDENED THROUGH 60-63 Rc
Heads drawn for maximum toughness and easy machining



HOW TO ORDER Specify:		
Quantity.	Cat. No.	Length
25	MTT-10-50	L-150
50	MTT-20-75	L-150

D	H	T	P	S	REGAL CATALOG NO.	NET PRICE EACH (US\$)	
						LENGTHS	
						L-150	L-200
SHOULDER DIA. +0mm -0.1mm	HEAD DIA. +0mm -0.2mm	HEAD THICK. +0mm -0.05mm	PIN DIA. -.002mm -.008mm	SHOULDER LENGTH -1mm -2mm			
						+1mm -0mm	+1mm -0mm
2.0	4.0	2.0	0.8	50	MTT- 08 - 50	9.70	-
				75	MTT- 08 - 75	9.70	-
			0.9	50	MTT- 09 - 50	9.70	-
				75	MTT- 09 - 75	9.70	-
			1.0	35	MTT- 10 - 35	9.70	-
				50	MTT- 10 - 50	9.70	11.75
				75	MTT- 10 - 75	9.45	10.25
			1.1	50	MTT- 11 - 50	9.70	10.20
				75	MTT- 11 - 75	9.45	9.70
			1.2	50	MTT- 12 - 50	9.70	10.20
				75	MTT- 12 - 75	9.45	9.70
			1.3	50	MTT- 13 - 50	8.90	10.10
				75	MTT- 13 - 75	8.65	9.60
			1.4	50	MTT- 14 - 50	8.90	10.00
				75	MTT- 14 - 75	8.65	9.50
			3.0	6.0	3.0	1.5	35
50	MTT- 15 - 50	7.90					8.80
75	MTT- 15 - 75	7.65					8.30
1.6	50	MTT- 16 - 50				7.55	8.70
	75	MTT- 16 - 75				7.50	8.20
1.7	50	MTT- 17 - 50				7.45	8.60
	75	MTT- 17 - 75				7.40	8.10
1.8	50	MTT- 18 - 50				7.30	8.50
	75	MTT- 18 - 75				7.25	8.00
1.9	50	MTT- 19 - 50				7.05	8.40
	75	MTT- 19 - 75				7.00	7.90
2	50	MTT- 20 - 50				6.75	8.20
	75	MTT- 20 - 75				6.70	7.70
2.2	50	MTT- 22 - 50				6.55	8.00
	75	MTT- 22 - 75				6.50	7.50
2.5	35	MTT- 25 - 35				6.30	8.65
	50	MTT- 25 - 50	6.30	7.65			
	75	MTT- 25 - 75	6.25	7.15			

Regal Components, Inc.

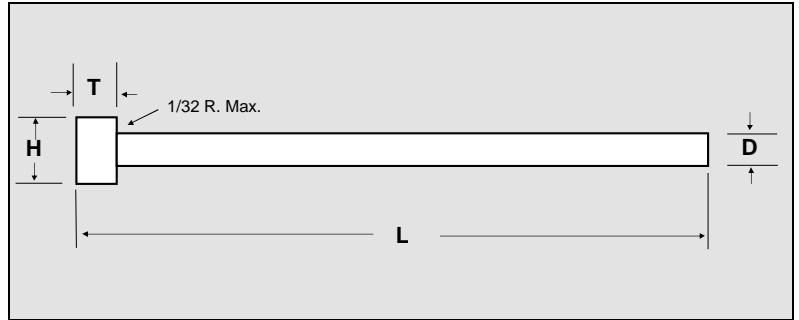
4733 122nd Ave. North, Clearwater, FL 33762 USA

Ph: 727-299-0800 Fax: 727-499-7109 E-Mail: sales@regalcomps.com - Web Site: www.regalcomps.com

MTT Type *Euro Metric*

MATERIAL: M-2 HIGH SPED STEEL (1.3343)
HARDENED-THROUGH 60-63 Rc
Heads drawn for maximum toughness and easy machining

TOLERANCES (METRIC ISO)		
PIN DIA. (D) g6		R
SIZE	TOLERANCE	
0 to 3 mm	- 0.002 mm - 0.008 mm	0.3 mm
3.5 to 6 mm	- 0.004 mm - 0.012 mm	0.3 mm
8.0 to 10 mm	- 0.002 mm - 0.008 mm	0.5 mm



HOW TO ORDER: Specify		
Quantity	Cat. No.	Length
60	MTT-5.0	L-160
12	MTT-1.5	L-125

D		H	T	REGAL CATALOG NO.	NET PRICE EACH (US\$)				
PIN DIA. g6 <i>(See table above for actual tolerances)</i>		HEAD DIA.	HEAD THICK.		LENGTHS <i>+ 2.0 mm - 0.0 mm</i>				
NOMINAL SIZE <i>mm</i>	INCH CONVERSION	<i>+ 0.0 mm - 0.2 mm</i>	<i>+ 0.0 mm - 0.5 mm</i>		L-100	L-125	L-160	L-200	L-250
1.5	0.0591	3.0	1.5	MTT-1.5	3.20	3.60	3.99	5.59	-
2.0	0.0787	4.0	2.0	MTT-2.0	3.60	3.99	4.39	5.59	7.01
2.2	0.0866	4.0	2.0	MTT-2.2	4.13	4.39	4.69	5.85	10.78
2.5	0.0984	5.0	2.0	MTT-2.5	4.13	4.39	4.69	5.85	10.78
3.0	0.1181	6.0	3.0	MTT-3.0	4.06	4.29	4.52	5.62	10.78
3.2	0.1260	6.0	3.0	MTT-3.2	4.59	4.79	5.41	7.01	9.82
3.5	0.1378	8.0	3.0	MTT-3.5	4.59	4.79	5.41	7.01	9.82
4.0	0.1575	8.0	3.0	MTT-4.0	4.79	5.02	5.61	7.01	9.82
4.2	0.1654	8.0	3.0	MTT-4.2	5.02	5.54	5.94	7.24	9.82
4.5	0.1772	8.0	3.0	MTT-4.5	5.21	5.61	6.01	7.24	10.29
5.0	0.1969	10.0	3.0	MTT-5.0	5.21	5.61	6.01	7.24	10.29
5.2	0.2047	10.0	3.0	MTT-5.2	5.61	5.81	6.20	7.47	10.52
5.5	0.2165	10.0	3.0	MTT-5.5	5.61	5.81	6.20	7.47	11.67
6.0	0.2362	12.0	5.0	MTT-6.0	5.61	5.81	6.20	7.47	13.06
8.0	0.3150	14.0	5.0	MTT-8.0	8.42	8.61	9.01	9.60	16.01
9.0	0.3543	14.0	5.0	MTT-9.0	11.62	12.80	14.78	17.19	20.00
10.0	0.3937	16.0	5.0	MTT-10.0	11.19	11.62	12.41	14.94	19.21

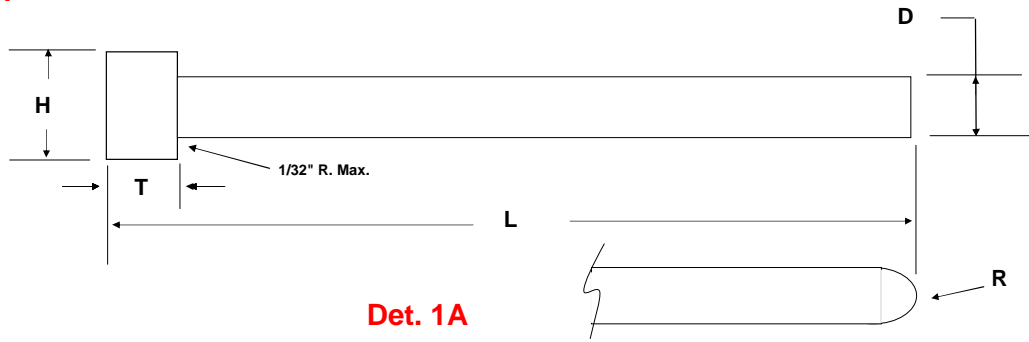
Regal Components, Inc.

4733 122nd Ave. North, Clearwater, FL 33762 USA

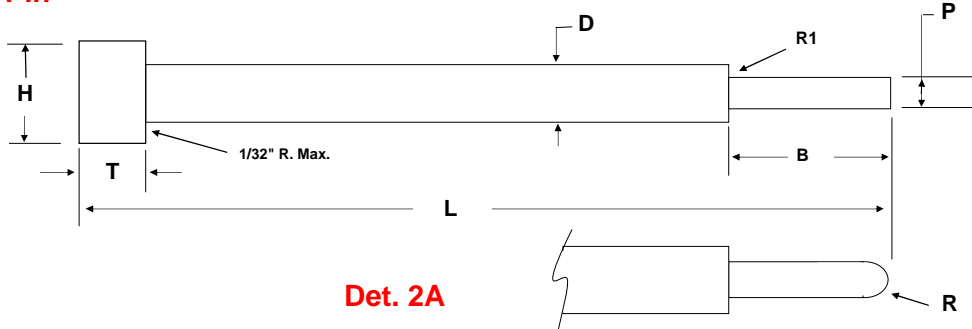
Ph: 727-299-0800 Fax: 727-499-7109 E-Mail: sales@regalcomps.com Web Site: www.regalcomps.com

Custom Pins & Blades

Det. 1 Straight Pin

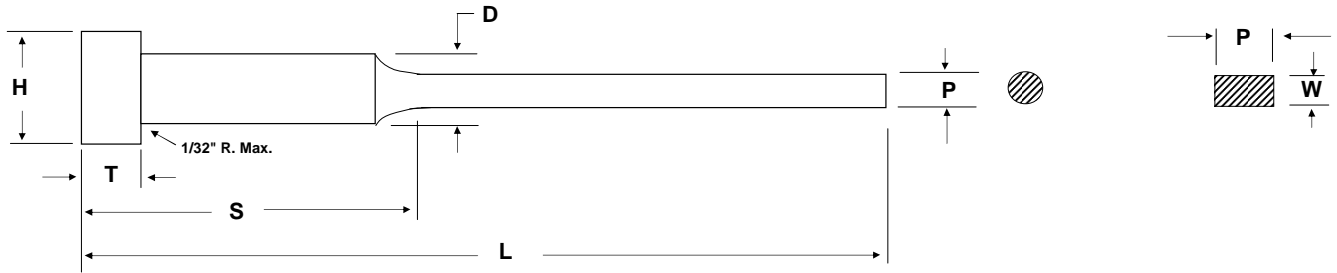


Det. 2 Stepped Core Pin



Det. 3 Stepped Ejector Pin

Det. 3A Ejector Blade



Qty.	Detail	Dimensions		Tolerances	
		D		+	-
Material:	H			+	-
	T			+	-
	L			+	-
	S			+	-
Hardness:	P			+	-
	W			+	-
Modify Cat. No./Part No.	Mfr.	R		+	-
Notes & Comments		R1		+	-
		B		+	-
Contact Name:		Company Name:		Address	
Phone No.		Fax No.		E-Mail Address:	
Ref. R. F. Q No. <input type="checkbox"/> P. O. No.		Special Instructions/Requirements:			

Fax to: 727-499-7109

OR

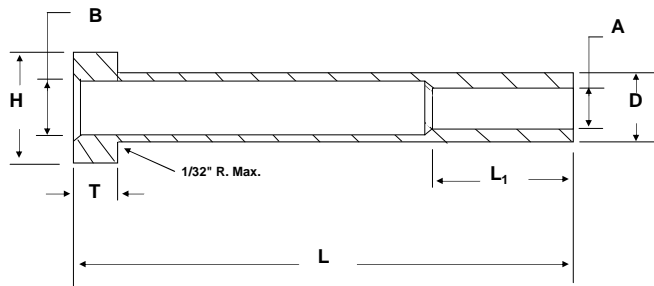
E-Mail to sales@regalcomps.com

Regal
Components

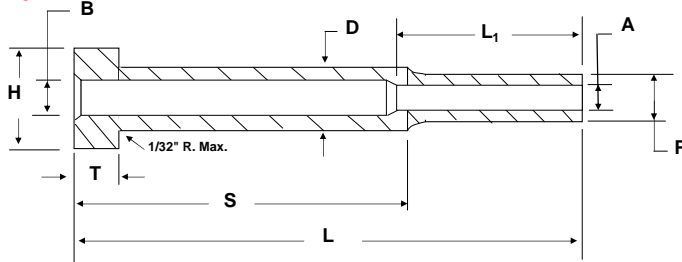
4733 122nd Ave. N., Clearwater, FL 33762
Ph: 727-299-0800 Fax: 727-499-7109 E-Mail: sales@regalcomps.com www.regalcomps.com

Custom Sleeves & Water-Cooled Core Pins

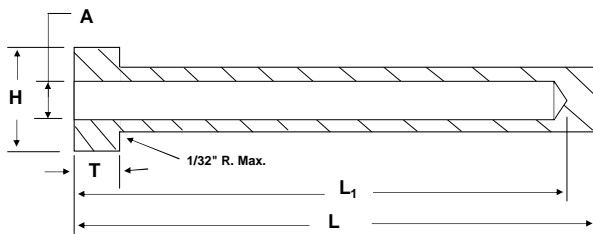
Det. ESL-1 Straight Ejector Sleeve



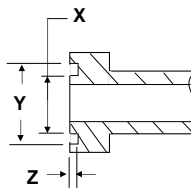
Det. ESL-2 Stepped Ejector Sleeve



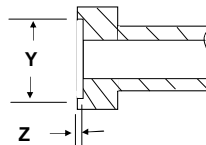
Det. WCC Water-Cooled Core Pin



Det. WCC-1



Det. WCC-2



Qty.	Detail	Material	Hardness Rc	Dimensions		Tolerances	
Modify Cat. No./Part No.				A		+	-
Manufacturer				B		+	-
				D		+	-
Notes & Comments				H		+	-
				L		+	-
				L ₁		+	-
				P		+	-
				R		+	-
				R ₁		+	-
				S		+	-
				T		+	-
				X		+	-
				Y		+	-
Z		+	-				
Contact Name:			Company Name:			Address	
Phone No.		Fax No.		E-Mail Address:		Date:	
Ref. R. F. Q No. <input type="checkbox"/> P. O. No.			Special Instructions/Requirements:				

Fax to: 727-499-7109

or

E-Mail to sales@regalcomps.com



4733 122nd Ave. N., Clearwater, FL 33762
 Ph: 727-299-0800 Fax: 727-499-7109 E-Mail: sales@regalcomps.com www.regalcomps.com

About Regal

Regal Components, Inc. was founded in 2005 by Fred Coelho, President of Ezell Precision Tool Company (www.ezellprecision.com), a manufacturer of high-precision custom die- and mold-ready tooling, to supply standard specialty mold and die components.



Other Products

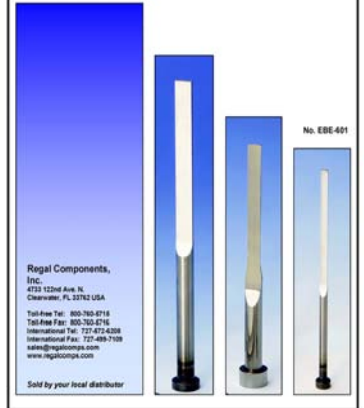
Ejector Blades

For a price catalog call us or download it from our web site at www.regalcomps.com



Regal
Components
Higher Standards for Molds and Dies

**Ejector
Blades**
U. S. Standard
Inch



Regal Components, Inc.
4733 122nd Ave. N.
Clearwater, FL 33762 USA
Toll-Free Tel: 800-760-5715
Tel-Area Fax: 800-760-5716
International Tel: 727-499-7109
International Fax: 727-499-7109
sales@regalcomps.com
www.regalcomps.com

Sold by your local distributor

Specials

Custom Core Pins, Ejectors, Sleeves, Blades, and Punches for Molds and Dies can be made from various grades of tool steels, including particle steels, stainless, and copper alloys.



Tolerances can be held to .000050" and surface finishes to 2 RMS.

Fax or e-mail your drawings or sketches for a prompt quotation.

Regal
Components

Higher Standards for Molds and Dies

an Ezell Specialty Products company

4733 122nd Ave. N.
Clearwater, FL 33762 USA
Tel: 727-299-0800 Fax : 727-499-7109
Toll Free: 800-760-5715
E-Mail: sales@regalcomps.com
Web Site: www.regalcomps.com

MEMBER
AMBA

