

Regal Components

an Ezell Specialty Products company

Higher Standards for Molds and Dies

Ejector Blades

*U. S. Standard
Inch*

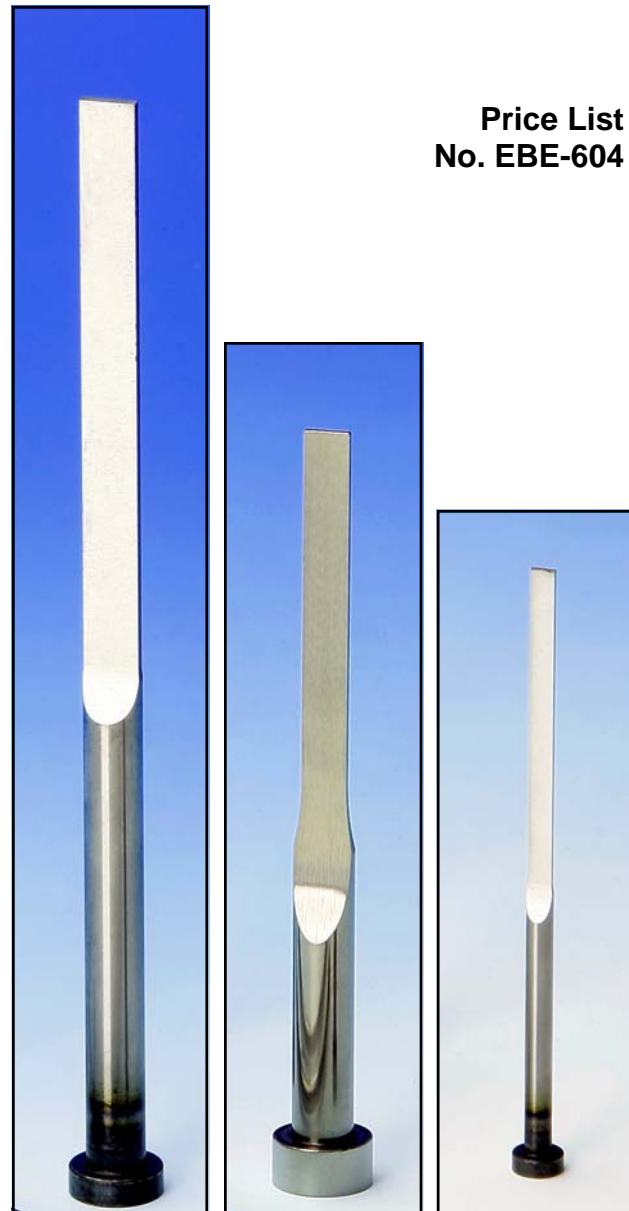
Price List
No. EBE-604

Regal Components, Inc.
4733 122nd Ave. N.
Clearwater, FL 33762 USA

Tel: 727-299-0800
Fax: 727-499-7109
Toll-free Tel: 800-760-5715

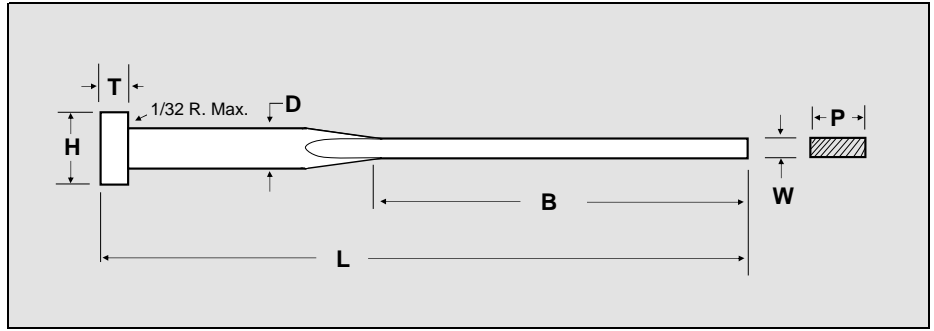
sales@regalcomps.com
www.regalcomps.com

Sold through your local distributor



EBE Type

MATERIAL: H-13 HOTWORK DIE STEEL
 BLADE HARDNESS: 50-54 RC
 HEADS ANNEALED FOR EASY MACHINING



HOW TO ORDER: Specify		
Quantity	Cat. No.	Length
60	EBE11-324 -	6
12	EBE17-624 -	9

REGAL CATALOG NO.	W	P	D	B	H	T	NET PRICE EACH (US\$)									
							L - STANDARD OVERALL LENGTH									
							+ .12" / - .00"									
							5"	6"	6-3/8"	7-3/8"	8"	8-3/8"	9-3/8"	10-3/8"		
- 5	- 6	- 7	- 8	- 9	- 10											
BLADE THICK.	BLADE WIDTH	PIN DIA.	BLADE LENGTH	HEAD DIA.	HEAD THICK.											
EBE9-244	.024	.100	.125	4-3/8	1/4	1/8	-	-	20.77	-	-	-	-	-		
EBE9-323	.032	.100	.125	3	1/4	1/8	19.63	20.01	-	-	-	-	-	-		
EBE9-324	.032	.100	.125	4-3/8	1/4	1/8	-	-	20.77	20.77	-	-	-	-		
EBE9-463	.046	.100	.125	3	1/4	1/8	19.63	20.01	-	-	-	-	-	-		
EBE9-464	.046	.100	.125	4-3/8	1/4	1/8	-	-	20.77	20.77	-	-	-	-		
EBE11-244	.024	.140	.156	4-3/8	9/32	5/32	-	-	20.77	-	-	-	-	-		
EBE11-323	.032	.140	.156	3	9/32	5/32	-	20.01	-	-	20.85	-	-	-		
EBE11-324	.032	.140	.156	4-3/8	9/32	5/32	-	-	20.77	20.77	-	21.62	-	-		
EBE11-463	.046	.140	.156	3	9/32	5/32	-	20.01	-	-	23.16	-	-	-		
EBE11-464	.046	.140	.156	4-3/8	9/32	5/32	-	-	20.77	20.77	-	21.62	-	-		
EBE13-244	.024	.172	.187	4-3/8	3/8	3/16	-	-	25.63	-	-	-	-	-		
EBE13-323	.032	.172	.187	3	3/8	3/16	-	24.86	-	-	25.70	-	-	-		
EBE13-324	.032	.172	.187	4-3/8	3/8	3/16	-	-	25.63	25.63	-	26.32	-	-		
EBE13-463	.046	.172	.187	3	3/8	3/16	-	24.86	-	-	25.70	-	-	-		
EBE13-464	.046	.172	.187	4-3/8	3/8	3/16	-	-	25.63	25.63	-	26.32	-	-		
EBE13-623	.062	.172	.187	3	3/8	3/16	-	24.86	-	-	25.70	-	-	-		
EBE13-624	.062	.172	.187	4-3/8	3/8	3/16	-	-	25.63	25.63	-	26.32	-	-		
EBE17-323	.032	.234	.250	3	7/16	3/16	25.40	27.23	-	-	27.66	-	-	-		
EBE17-324	.032	.234	.250	4-3/8	7/16	3/16	-	-	28.00	28.00	-	28.76	29.61	30.41		
EBE17-463	.046	.234	.250	3	7/16	3/16	25.40	27.23	-	-	27.66	-	-	-		
EBE17-464	.046	.234	.250	4-3/8	7/16	3/16	-	-	28.00	28.00	-	36.41	29.61	30.41		
EBE17-623	.062	.234	.250	3	7/16	3/16	25.40	27.23	-	-	27.66	-	-	-		
EBE17-624	.062	.234	.250	4-3/8	7/16	3/16	-	-	28.00	28.00	-	28.76	29.42	30.41		
EBE21-324	.032	.296	.312	4-3/8	1/2	1/4	-	-	32.02	33.58	-	34.20	35.04	35.96		
EBE21-464	.046	.296	.312	4-3/8	1/2	1/4	-	-	31.18	32.74	-	33.35	34.20	35.04		
EBE21-624	.062	.296	.312	4-3/8	1/2	1/4	-	-	30.34	31.90	-	33.09	33.93	35.04		
EBE21-784	.078	.296	.312	4-3/8	1/2	1/4	-	-	29.61	31.25	-	32.63	33.74	34.58		
EBE25-324	.032	.359	.375	4-3/8	5/8	1/4	-	-	36.18	41.31	-	37.94	38.40	39.21		
EBE25-464	.046	.359	.375	4-3/8	5/8	1/4	-	-	35.54	36.53	-	37.10	37.49	38.33		
EBE25-624	.062	.359	.375	4-3/8	5/8	1/4	-	-	35.16	36.15	-	36.87	37.03	37.87		
EBE25-784	.078	.359	.375	4-3/8	5/8	1/4	-	-	34.70	35.69	-	36.23	36.69	37.53		
EBE33-625	.062	.484	.500	5-3/8	3/4	1/4	-	-	-	-	-	53.78	54.62	55.43		
EBE33-785	.078	.484	.500	5-3/8	3/4	1/4	-	-	-	-	-	53.78	54.62	55.43		

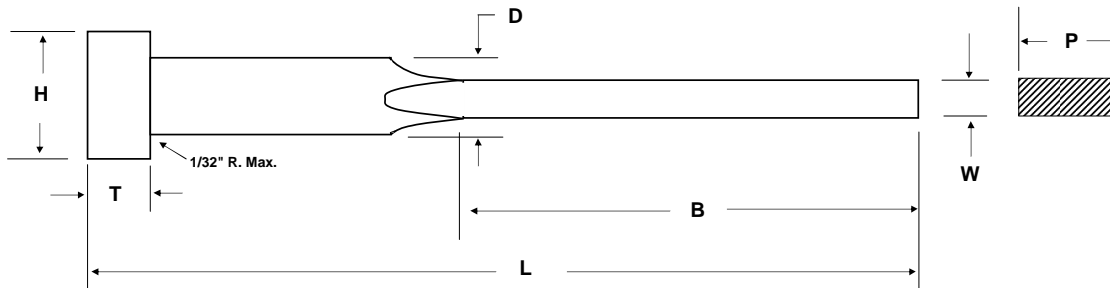
Sold by your local distributor

Regal Components, Inc.

4733 122nd Ave. N., Clearwater, FL 33762 USA
 Tel: 727-299-0800 Fax: 727-499-7109 Toll-free Tel: 800-760-5715
 E-Mail: sales@regalcomps.com - www.regalcomps.com

Ejector Blades

Det. EBE



Fax to: 727-499-7109 or E-Mail to sales@regalcomps.com

Qty.	Detail	Dimensions		Tolerances	
Material		D		+	-
Hardness		H		+	-
Modify Cat. No./Part No.		T		+	-
		P		+	-
Mfr.		W		+	-
Notes & Comments		B		+	-
Contact Name:		Company Name:		Address	
Phone No.	Fax No.	E-Mail Address:		Date:	
Ref. R. F. Q No.	<input type="checkbox"/> P. O. No.	Special Instructions/Requirements:			



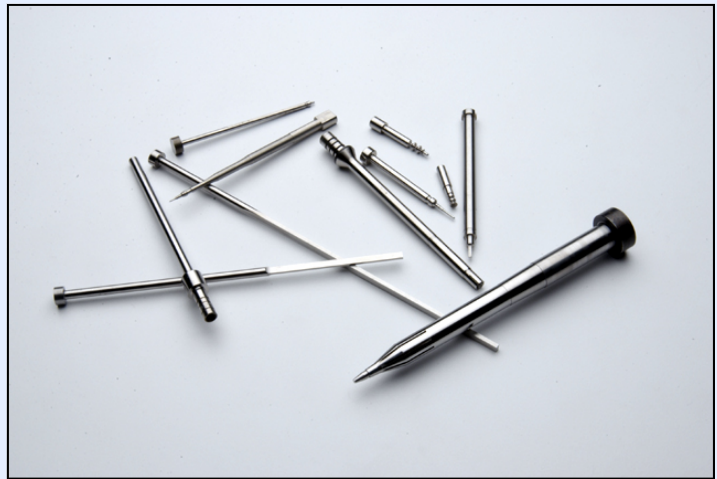
Higher Standards for Molds and Dies

4733 122nd Ave., N., Clearwater, FL 33762 USA
 Tel: 727-299-0800 Fax: 727-499-7109 E-mail: sales@regalcomps.com

Specials

Custom Core Pins, Ejectors, Sleeves, Blades, and Punches for Molds and Dies can be made from various grades of tool steels, including particle steels, stainless, and copper alloys. Tolerances can be held to .000050" and surface finishes to 2 RMS.

Fax or e-mail your drawings or sketches for a prompt quotation.



Regal
Components

Higher Standards for Molds and Dies

an Ezell Specialty Products company

4733 122nd Ave. N.
Clearwater, FL 33762 USA
Tel: 727-299-0800 Fax : 727-499-7109
Toll Free: 727-760-5715
E-Mail: sales@regalcomps.com
Web Site: www.regalcomps.com

