

# KALLER<sup>®</sup>



## Roller Cam RC2, RCP2

## Roller Cam RC2, RCP2

The next generation of KALLER Roller Cam has been developed to meet the industry's increasing demands on standard cam units.

This new generation offers:

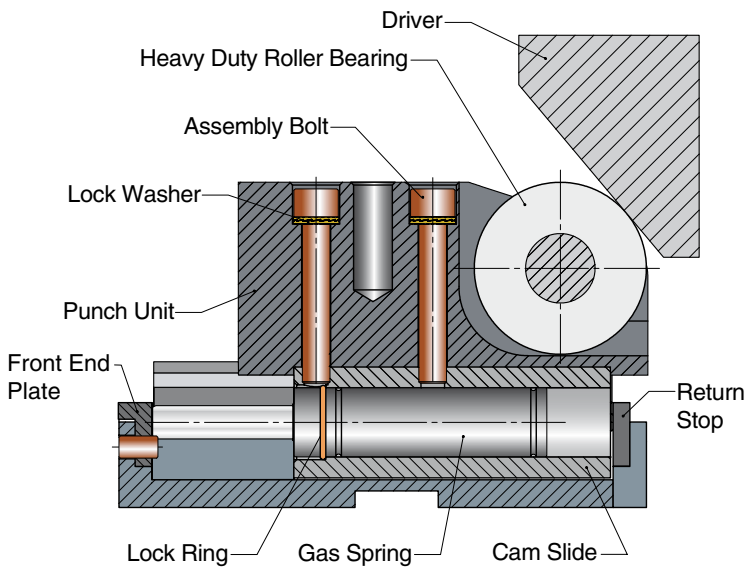
- High precision and maintenance free guiding allowing for more off center loading and upside-down installation,
- Long service life,
- Built in return stroke dampening,
- Easy punch attachment. For other type of application, please contact your local distributor or Strömsholmen AB

The KALLER Roller Cam is available for a maximum piercing force of 30 kN, 50 kN and 150 kN.

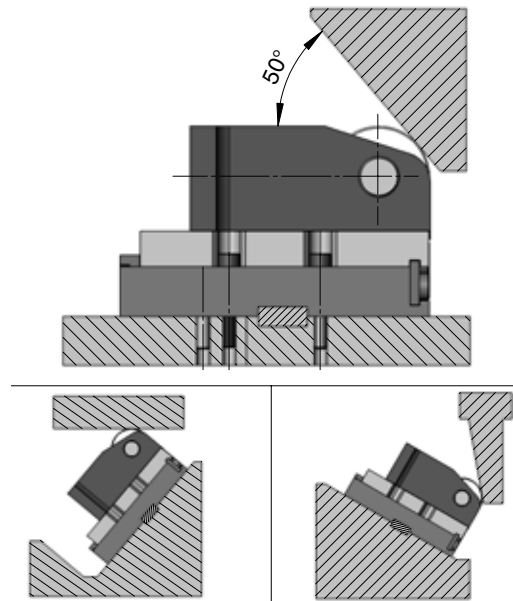
The driver itself is to be designed by the user to give the required displacement profile.

The contact surface on the driver should be hardened to approximately 58-60 HRC.

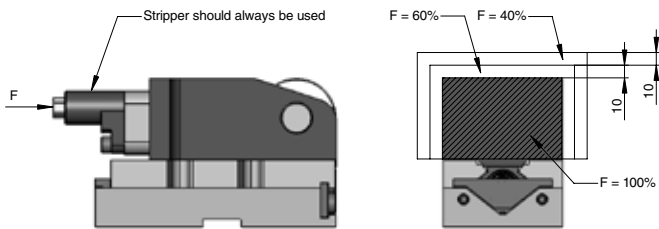
### Design



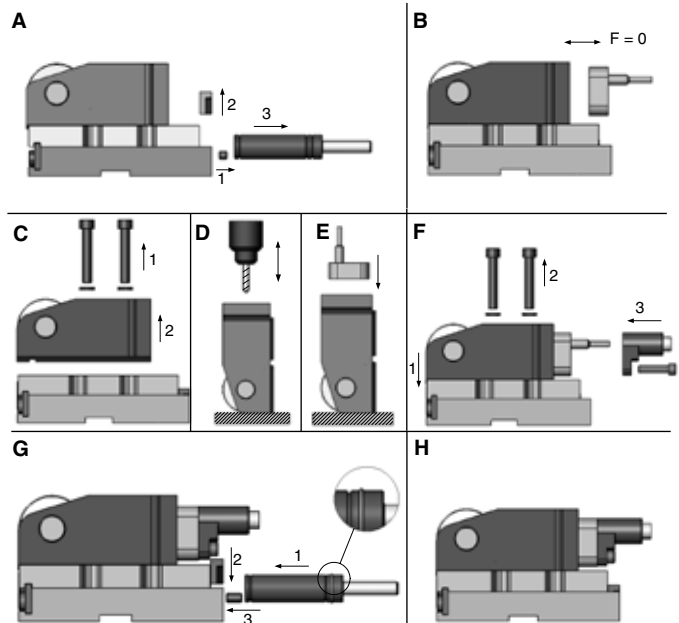
### Mounting options



### Punch location



### Punch attachment



### Basic Information

Recommended max strokes/min ..... 40 spm (at 20°C)

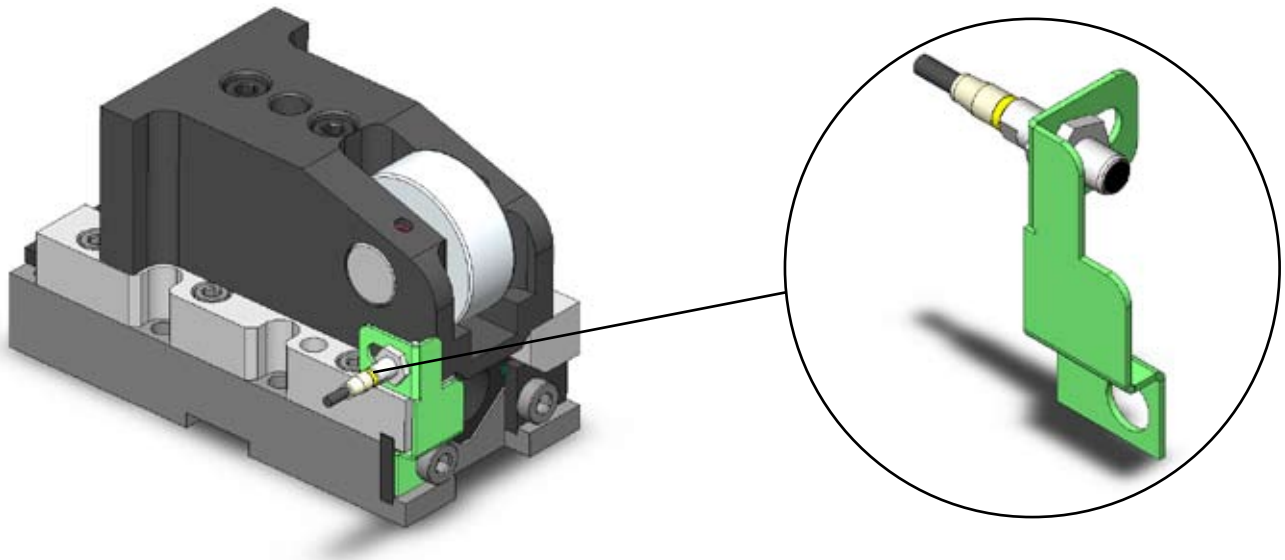
Max velocity ..... 0.8 m/s

Max play at face of punch unit ..... 0.02 mm

For information about max attachment weight, please contact your local distributor or Strömsholmen AB

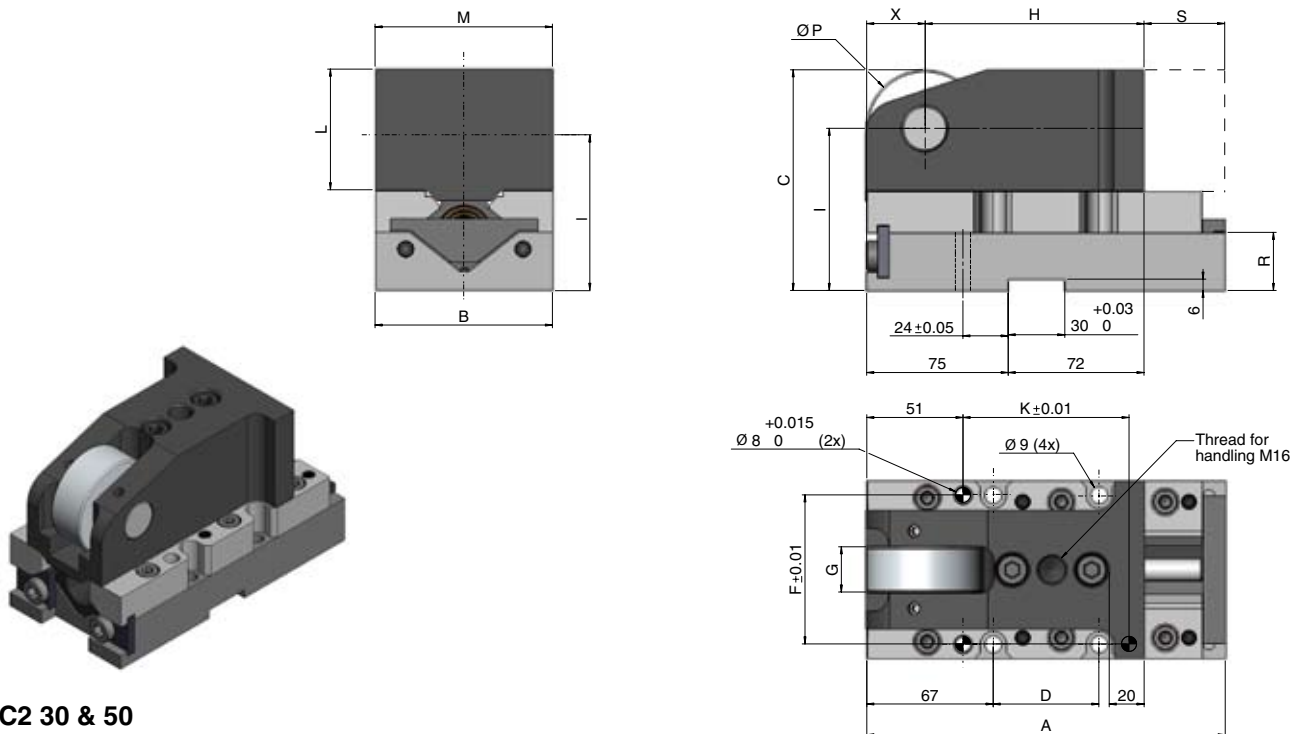
## Roller Cam – Sensor Kit

Roller Cam Sensor Kits are an optional accessory to all Roller Cams, providing a signal to the press when the Roller Cam is in start position. The Sensor Kit can easily be attached to the Roller Cam using return stop screw.



**Note!** For more information, please contact your local distributor or Strömsholmen AB

## Dimensions RC2 30 & RC2 50



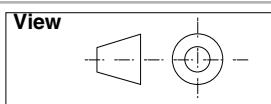
### RC2 30 & 50

Order No.	Stroke S (mm)	Nominal force (daN)	Initial return force (daN)	Gas spring	A	B	C	D	F	G	H	I	K	L	M	P	R	X	Max width of the driver
RC2 30-050	50	3000	200	M2 200	190	94	117	56	79	25	116	86	88	64	94	62	31	31	36
RC2 30-080	80				220			86					118						
RC2 50-050	50	5000	350	X 350	190	120	140	56	105	29	111	103	88	75	120	72	40	36	
RC2 50-080	80				220			86					118						
RC2 50-100	100				240			126					120						

**Note!** For 2D & 3D CAD downloads, see [www.kaller.com](http://www.kaller.com)

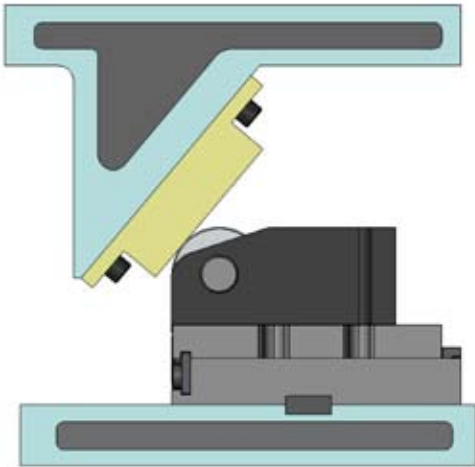
We reserve the right to add, delete or modify components without notification.

All dimensions are stated in mm.  
All dimensions are nominal unless tolerance is stated.



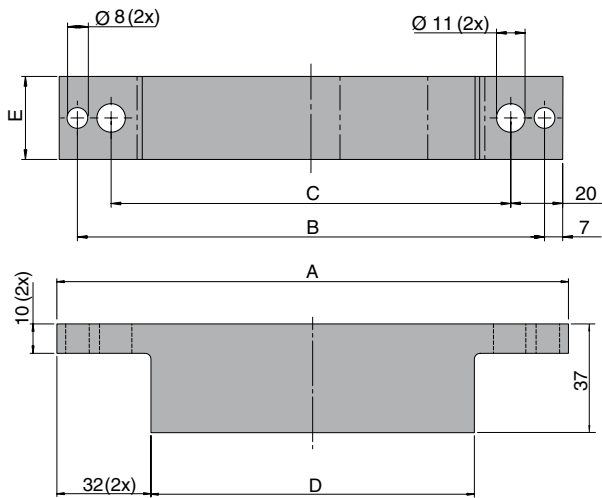


## Roller Cam – Driver Plate

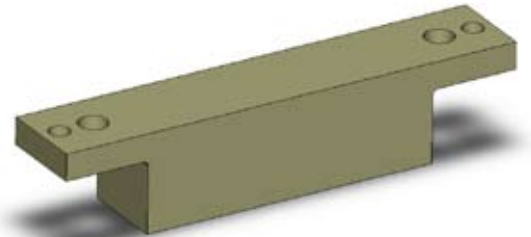


Roller Cam Driver Plates has been designed to simplify the installation of Roller Cams.

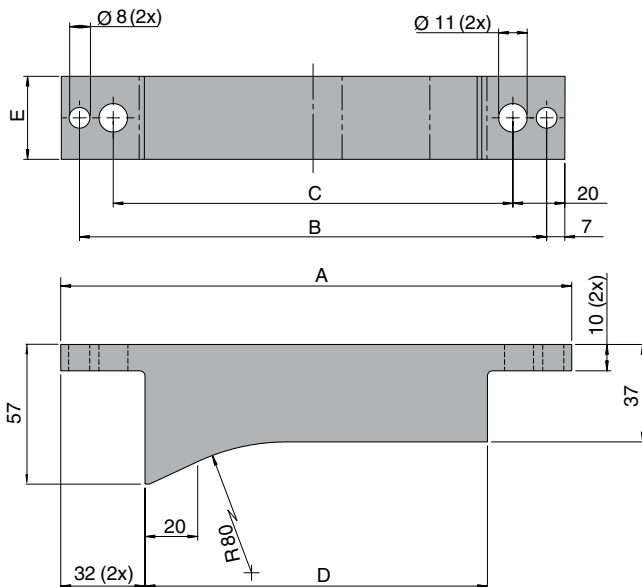
- Ground and hardened contact surface (60 HRC)
- Standardised sizes
- Independent of installation angle



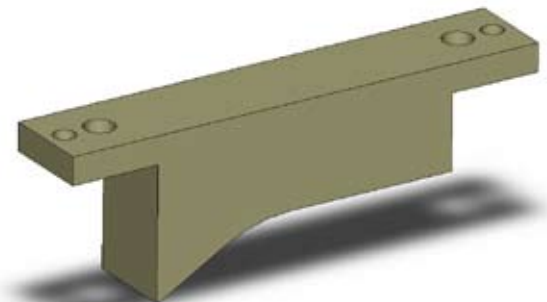
### Driver Plate – Flat



Order No.	A	B	C	D	E	Weight [kg]
3021265-01	174	160	134	110	32	1.16
3021265-02	264	250	224	200	32	2.00



### Driver Plate – Soft Start & Stop



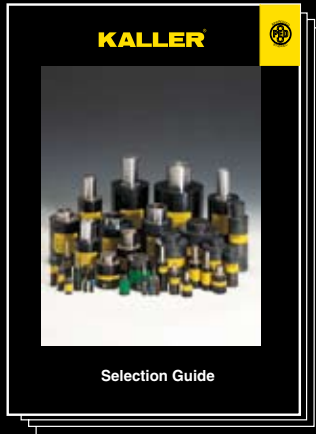
Order No.	A	B	C	D	E	Weight [kg]
3021570-01	194	180	154	130	32	1.43
3021570-02	284	270	244	220	32	2.27
3021570-03	194	180	154	130	65	2.91
3021570-04	284	270	244	220	65	4.61

We reserve the right to add, delete or modify components without notification.

All dimensions are stated in mm.  
All dimensions are nominal unless tolerance is stated.

# KALLER®

## The Safer Choice



Selection Guide

### Gas Springs

Kaller developed the first nitrogen gas spring for press tools and today offers a comprehensive selection of high quality gas springs for use in different tool & die applications.



Controllable Gas Spring - KF2

### Controllable Gas Springs-KF2

Kaller controllable springs are a family of gas springs, for use in press tools, that can be locked in their bottom position and where the return stroke of the spring can be controlled.



Flange Stripper LW, LT

### Flange Stripper Unit

Kaller Flange Stripper Unit is used in flanging dies for stripping/lifting a flanged part after forming. It provides 200 daN of stripping force, can be top or bottom mounted and is self guiding.



Flex Cam™

### Flex Cam™

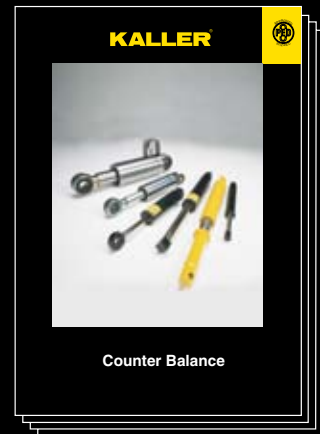
The Flex Cam is used for piercing, cutting, forming and flanging operations. The system allows for a flexible distribution of forces with optimal direction and velocity. By using a Flex Cam, fewer tools are required in production.



Roller Cam RC2, RCP2

### Roller Cam

Kaller Roller Cam is used for piercing, trimming, flanging and restriking. The Roller Cam can be mounted in both vertical and horizontal angles.



Counter Balance

### Counter Balance

Kaller Counter Balance gas springs can be used to lift, lower, assist, balance, and hold in a multitude of applications.

# KALLER®

Strömsholmen AB

Box 216 • SE-573 23 Tranås

Sweden

Phone +46 140 571 00

info@kaller.com



For more information see our website

[www.kaller.com](http://www.kaller.com)

**KALLER®**  
GAS SPRINGS

USA +1 586 415 6677

Korea +82 31 422 4591

China +86 22 83962995

Mexico +11 5281 81450570