

# KALLER®



## Ejector Pins EP2 16 & 24

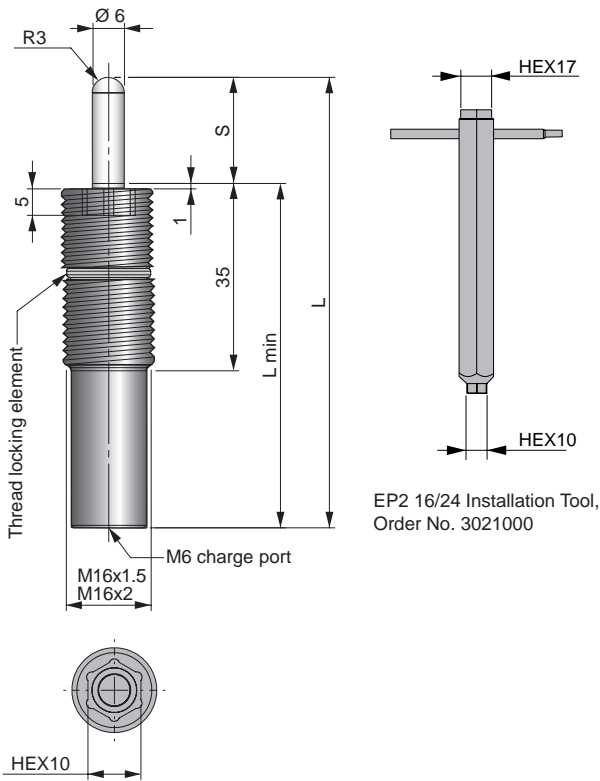
## EP2 16 & 24

Ejector Pin (EP) gas springs have been designed to replace mechanical spring plungers/lifters.

They have a partially threaded M16x1.5/M16x2 or M24x1.5 body and provide a fully adjustable and superior lifting force to conventional mechanical spring plungers/lifters.

EP2 gas springs are all colour-coded for easy force identification and can be adjusted and recharged to meet individual force requirements.

## EP2 16



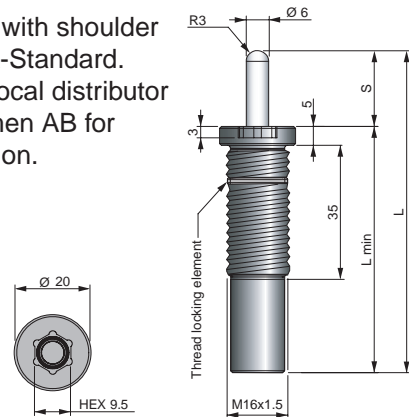
EP2 16/24 Installation Tool, Order No. 3021000

Model	Force in N at +20°C		Charging pressure (bar)	End force in N at +20°C, at full stroke
	Initial	Colour		
EP2 16x2 02	20	Orange	6	32
EP2 16x2 04	40	Purple	12	64
EP2 16x1.5/x2 05	57	Green	20	91
EP2 16x1.5/x2 10	110	Blue	40	180
EP2 16x1.5/x2 20	210	Red	75	440
EP2 16x1.5/x2 40	420	Yellow	150	670
EP2 16x1.5/x2 XX*	20-420	Black	6-150	32-670

\* Force to be set by the customer. Delivered with a pre-charge of 5-10 bar.

S Stroke	L ±0.25	L min	Gas vol. (l)	Weight (kg)
10	65	55	0.002	0.06
20	85	65	0.003	0.07
30	105	75	0.003	0.07
40	125	85	0.004	0.08
50	145	95	0.005	0.08
60	165	105	0.006	0.09
70	185	115	0.007	0.10
80	205	125	0.008	0.11
100	245	145	0.009	0.11
125	295	170	1.012	0.13

Also available with shoulder as per GM NA-Standard. Contact your local distributor or Strömsholmen AB for more information.



### How to order

**EP2 16x1.5 05-10**

Model: \_\_\_\_\_

Stroke Length (mm) (10, 20, 30, 40, 50, 60, 70, 80, 100, 125)

Thread: x1.5 = M16x1.5  
x2 = M16x2

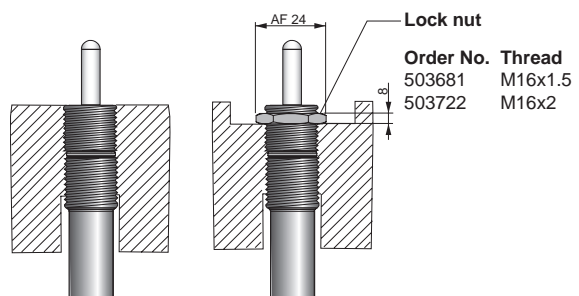
Force: 02 = Orange 20 = Red  
04 = Purple 40 = Yellow  
05 = Green xx = Black, delivered with a pre-charge of 5-10 bar  
10 = Blue

## Basic Information

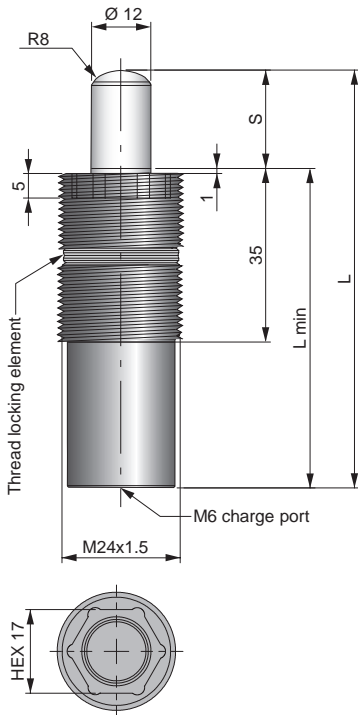
Pressure medium ..... Nitrogen  
 Max. charging pressure ..... 150 bar  
 Min. charging pressure ..... 6 bar  
 Operating temperature ..... 0 - +80°C  
 Force increase by temperature ..... ± 0.3%/°C  
 Recommended max strokes/min ..... ~ 100 (at 20°C)  
 Max piston rod velocity ..... 1.6 m/s

**Note!** For more information see main catalogue.

## Mounting Possibilities

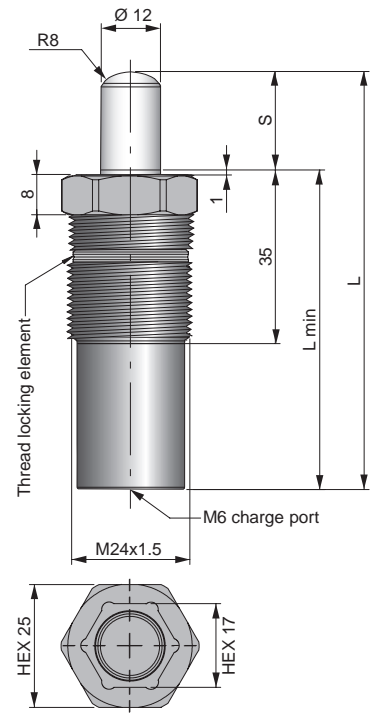


## EP2/EP2S 24



Model	Force in N at +20°C		Charging pressure (bar)	End force in N at +20°C, at full stroke
	Initial	Colour		
EPS2 24 07	65	Orange	6	110
EPS2 24 11	110	Purple	10	190
EP2/EP2S 24 20	230	Green	20	390
EP2/EP2S 24 40	450	Blue	40	800
EP2/EP2S 24 80	850	Red	75	1500
EP2/EP2S 24 170	1700	Yellow	150	2900
EP2/EP2S 24 XXX*	65-1700	Black	6-150	110-2900

\* Force to be set by the customer.  
Delivered with a pre-charge of 5-10 bar.



S Stroke	L ±0.25	L min	Gas vol. (l)	Weight (kg)
10	65	55	0.05	0.13
20	85	65	0.07	0.15
30	105	75	0.10	0.17
40	125	85	0.12	0.19
50	145	95	0.14	0.21
60	165	105	0.17	0.23
70	185	115	0.19	0.25
80	205	125	0.22	0.27
100	245	145	0.26	0.31
125	295	170	0.32	0.35

S Stroke	L ±0.25	L min	Gas vol. (l)	Weight (kg)
10	65	55	0.05	0.15
16	77	61	0.06	0.16
20	85	65	0.07	0.17
25	95	70	0.08	0.18
30	105	75	0.10	0.19
38	121	83	0.11	0.21
40	125	85	0.12	0.21
50	145	95	0.14	0.23
60	165	105	0.17	0.25
70	185	115	0.19	0.27
80	205	125	0.22	0.29
100	245	145	0.26	0.33
125	295	170	0.32	0.37

### How to order

**EP2 24 20-10**  
 Model: \_\_\_\_\_  
 Stroke Length (mm)  
 (10, 20, 30, 40, 50, 60, 70, 80, 100, 125)  
 Force: 20 = Green  
 40 = Blue  
 80 = Red  
 170 = Yellow  
 xxx = Black, delivered with a pre-charge of 5-10 bar

### How to order

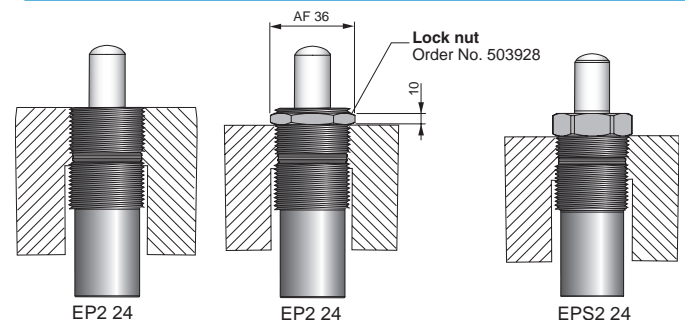
**EPS2 24 20-10**  
 Model: \_\_\_\_\_  
 Stroke Length (mm)  
 (10, 16, 20, 25, 30, 38, 40, 50, 60, 70, 80, 100, 125)  
 Force: 07 = orange      80 = Red  
 11 = Purple          170 = Yellow  
 20 = Green          xxx = Black, delivered with a pre-charge of 5-10 bar  
 40 = Blue

## Basic Information

Pressure medium ..... Nitrogen  
 Max. charging pressure ..... 150 bar  
 Min. charging pressure ..... 6 bar  
 Operating temperature ..... 0 - +80°C  
 Force increase by temperature ..... ± 0.3%/°C  
 Recommended max strokes/min ..... ~ 30-80 (at 20°C)  
 Max piston rod velocity ..... 1.6 m/s

**Note!** For more information see main catalogue.

## Mounting Possibilities

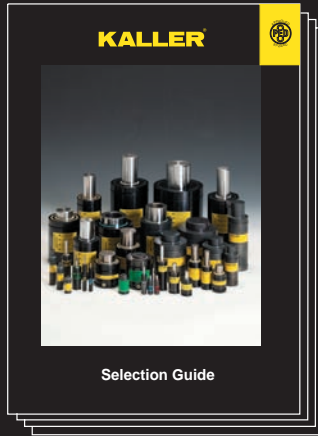


We reserve the right to add, delete or modify components without notification.

All dimensions are stated in mm.  
 All dimensions are nominal unless tolerance is stated.

# KALLER®

## The Safer Choice



### Gas Springs

Kaller developed the first nitrogen gas spring for press tools and today offers a comprehensive selection of high quality gas springs for use in different tool & die applications.



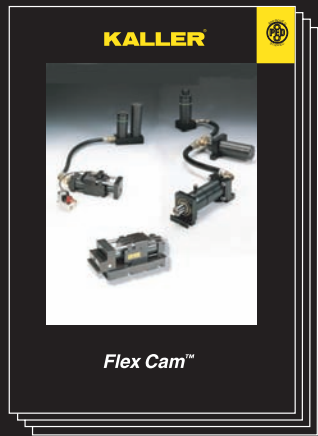
### Controllable Gas Springs-KF2

Kaller controllable springs are a family of gas springs, for use in press tools, that can be locked in their bottom position and where the return stroke of the spring can be controlled.



### Flange Stripper Unit

Kaller Flange Stripper Unit is used in flanging dies for stripping/lifting a flanged part after forming. It provides 200 daN of stripping force, can be top or bottom mounted and is self guiding.



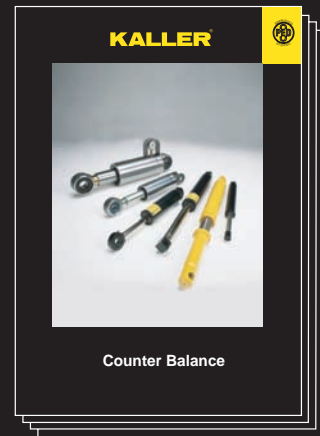
### Flex Cam™

The Flex Cam is used for piercing, cutting, forming and flanging operations. The system allows for a flexible distribution of forces with optimal direction and velocity. By using a Flex Cam, fewer tools are required in production.



### Roller Cam

Kaller Roller Cam is used for piercing, trimming, flanging and restriking. The Roller Cam can be mounted in both vertical and horizontal angles.



### Counter Balance

Kaller Counter Balance gas springs can be used to lift, lower, assist, balance, and hold in a multitude of applications.

**KALLER®**

Strömsholmen AB

Box 216 • SE-573 23 Tranås

Sweden

Phone +46 140 571 00

info@kaller.com



For more information see our website

[www.kaller.com](http://www.kaller.com)

**KALLER®**  
GAS SPRINGS

USA +1 586 415 6677

Korea +82 31 422 4591

China +86 22 83962995

Mexico +11 5281 81450570